

## AUTO-SLEEPER NUEVO EL

Auto-Sleepers have made the best of the limited washroom space by fitting a swing-wall that has the handbasin moulded into it. When you want to have a shower, this wall folds out to form a large shower cubicle.

Opposite the washroom, the kitchen is slightly small, with a separate hob and small oven/grill, plus a smallish (88-litre) fridge and eye-level microwave.

The rear lounge features two short facing settees; this seating converts into a transverse double bed. The Nuevo looks plush but we found its rear lounge too confined, and we much prefer the bigger Broadway EL Duo. Our test 'van also generated too much conversion noise on the road.



### fact file

**BASED ON:** Peugeot Boxer 2.2Hdi 100bhp

**PRICE FROM:** £45,195

**DIMENSIONS:** 5.63m L, 2.32m W, 2.88m H

**MAXIMUM WEIGHT:** 3300kg

**PAYLOAD:** 520kg

**TEST DATE:** June 2009

## ELDDIS AUTOQUEST 120



Motorhomes don't come much cheaper than this, and the Autoquest range has become increasingly popular over the past few years. Cheap it may be, but quality is still good and there's everything you'll need for a great holiday.

The lounge features large seat squabs but fairly short seat backs. The kitchen boasts a three-burner gas hob with oven and grill underneath. Cupboards lack positive locking, though, which is a safety concern.

Opposite the kitchen, the washroom is basic in nature, with a tip-up washbasin and clingy shower curtain. However, you can't have everything, especially considering the compact size and small price tag of this coachbuilt.

### fact file

**BASED ON:** Peugeot Boxer 2.2Hdi 100bhp

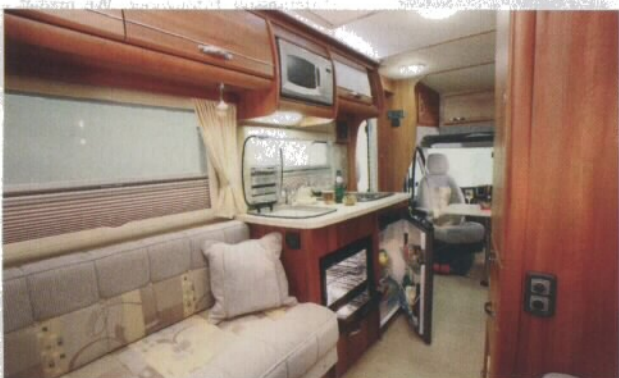
**PRICE FROM:** £31,649

**DIMENSIONS:** 5.77m L, 2.20m W, 2.77m H

**MAXIMUM WEIGHT:** 3000kg

**PAYLOAD:** 379kg

**TEST DATE:** n/a



## HOME CAR XS22

### fact file

**BASED ON:** Ford Transit 2.2TDCi 115bhp

**PRICE FROM:** £34,995

**DIMENSIONS:** 5.99m L, 2.31m W, 2.70m H

**MAXIMUM WEIGHT:** 3500kg

**PAYLOAD:** 903kg

**TEST DATE:** n/a

The XS22 brings a touch of continental style to a layout that's practically identical to the Autoquest and Auto-Sleeper. The rear lounge has a U-shape, although the section running along the rear wall relies on loose cushions, rather than 'proper' backrests, to go with its solid seat squabs. This means bed-making is a little easier at night, when the seating transforms into a large double bed. The kitchen is well-equipped, with a stainless-steel sink and hob, both with folding glass covers. There's also an oven and grill.

Opposite the kitchen, the washroom relies on fold-out plastic screens, instead of shower curtains, to make a showering space. However, it's still quite confined.

It's a bit more expensive than the Autoquest, but the latest Ford Transit base vehicle may add extra appeal for some buyers.



# ? 6-7m luxury 2-berths ?

buying | choosing a rear lounge

## KARMANN COLORADO 600



**WE LOVE**

### fact file

**BASED ON:** VW Transporter T5 Al-Ko  
**PRICE FROM:** £46,941  
**DIMENSIONS:** 6.22m L, 2.28m W, 2.88m H  
**MAXIMUM WEIGHT:** 3500kg  
**PAYLOAD:** 590kg  
**TEST DATE:** January 2005

The Colorado 600 is one of those rare things, a coachbuilt motorhome based on the Volkswagen T5. Of course, there have always been a few coachbuilts using the Transporter, going right back to the early rear-engined models and, interestingly, the Colorado's layout, with a rear U-shape lounge, copies the layouts found in the old rear-engined Transporter coachbuilts. In the old rear-engined models, it made sense to have a rear lounge, since the engine hump at the rear could hide under the rearmost settee.

In the Karmann Colorado 600, there's no rear engine to make this layout a necessity, but it still makes good sense, since it makes the best of the limited interior space. At night time, the U-shape section of seating at the rear makes a large double bed while, during the day it makes for a comfortable lounge or dining area. All the furniture

is really solid and well-built and this is a coachbuilt that could last a lifetime, if properly maintained.

The washroom, also, is very well designed and screwed together, and this is a motorhome with a touch of continental style. There's no oven though. But you can carry rear passengers as the Colorado has seatbelts on the forward-facing section of the U-lounge. That adds versatility but it won't be the most comfortable place to ride.



## BENTLEY OCHRE



A new marque, Bentley is run by father and son team Gordon and Richard Bentley, who have decades of motorhome building experience. Their aim with the Ochre is to build a narrow-bodied motorhome which is easy to drive and yet provides all the luxuries of home, once on-site.

The Renault Trafic base provides MPV-style refinement and driving ease. It feels much more car-like than most coachbuilts. Inside, the rear lounge layout has two 5ft long settees.

A stylish washroom features a swing-wall design, and build-quality is very impressive throughout. We predict a bright future for this new brand.

## AUTOCRUISE STARDREAM

The Stardream is a great motorhome for those who enjoy driving, since its low-line Al-Ko chassis offers great roadholding. Inside, it's a luxurious low-profile for a couple, with a large U-shape settee with the option of single beds at night. The kitchen has a neat L-shape design and is very well equipped, while the washroom is one of the Stardream's star features.



**WE LOVE**

### fact file

**BASED ON:** Peugeot Boxer Al-Ko 2.2HDi 130  
**PRICE FROM:** £49,019  
**DIMENSIONS:** 6.85m L, 2.22m W, 2.71m H  
**MAXIMUM WEIGHT:** 3500kg  
**PAYLOAD:** 345kg  
**TEST DATE:** n/a



### fact file

**BASED ON:** Renault Trafic 2.0dCi platform-cab  
**PRICE FROM:** £41,950  
**DIMENSIONS:** 6.20m L, 2.07m W, 2.73m H  
**MAXIMUM WEIGHT:** 3270kg  
**PAYLOAD:** 450kg  
**TEST DATE:** December 2010

### OR TRY ONE OF THESE

The Marquis Suffolk is manufactured by Auto-Sleepers, but sold exclusively through the Marquis dealer network. Its key feature is the Mercedes base vehicle, usually with automatic gearbox.

## AUTO-TRAIL APACHE 634



The Apache is designed to be the ultimate end-lounge motorhome for two. The kitchen is unusually split into two; on one side there's a full cooker, while the other side boasts a stylish sink and drainer, plus a 96-litre fridge.

There's a well-designed washroom with a large separate shower. At night, there's the choice of either using the overcab bed, or converting the rear lounge into a large double. Alternatively, with the settees being 1.83m long, there's a

possibility of two single beds. With only belted seats for the driver and passenger, though, this is really a two-berth motorhome. Its less positive aspects are small water tanks, limited payload, and lack of positive locking on cupboard doors.

### fact file

**BASED ON:** Fiat Ducato 130 Multijet

**PRICE FROM:** £47,870

**DIMENSIONS:** 7.09m L, 2.31m W, 3.03m H

**MAXIMUM WEIGHT:** 3500kg

**PAYLOAD:** 240kg

**TEST DATE:** November 2010



## BESSACARR E520

The E520 copies the lounge layout found in most caravans, with two facing settees and a central chest of drawers between them. The settees are 1.79m and 1.89m long, so could be used as single beds by some couples, or as a massive transverse double bed that's 2.11m long.

The kitchen includes a full cooker, with a hob that features one electric hotplate. There's also a massive 175-litre SES fridge/freezer and a built-in microwave oven.

With a pale wood finish, the interior feels very modern. One of the top features is the washroom, which boasts a separate shower cubicle. This is a lovely room for those who prefer to use the facilities in their 'van, rather than those on a campsite.

### fact file

**BASED ON:** Fiat Ducato 130 Multijet

**PRICE FROM:** £48,675

**DIMENSIONS:** 7.04m L, 2.33m W, 2.77m H

**MAXIMUM WEIGHT:** 3500kg

**PAYLOAD:** 350kg

**TEST DATE:** Motorhomes of 2011 supplement



## MARQUIS HAMPSHIRE

Part of a range of Auto-Sleepers available from the Marquis dealer network, the Hampshire is a two-

berth with the emphasis on luxury.

The rear lounge features clever settees have bases that can be angled

upwards, to make two chaise-longue-style seats down either side. The washroom features a swing-wall design that works well in practice.

The kitchen is perhaps the best feature in the model. It has an L-shape design, offering plenty of work surface. It's also equipped with a large stainless-steel sink, 88-litre fridge and a full cooker. Neat touches include a slide-out section of worksurface. There's also an in-built microwave and plenty of storage space.

But you'll buy the Hampshire - or not - on the basis of its Mercedes chassis and lazy auto gearbox.

### fact file

**BASED ON:** Mercedes Sprinter 316

**PRICE FROM:** £58,995

**DIMENSIONS:** 7.29m L, 2.35m W, 2.86m H

**MAXIMUM WEIGHT:** 3880kg

**PAYLOAD:** 671kg

**TEST DATE:** November 2008 (Berkshire)





## ADRIA CORAL 670 SLL

The Adria features an unusual layout, with an exceptionally roomy U-shape rear lounge plus a smaller lounge at the front, with a half-dinette with seatbelts for

travelling. There's also a small single side-facing seat up-front which, together with the swivel cab seats, helps to make a seating or dining area for five. At night, this seating converts into a large single bed (perhaps a double for two small children), while the rear lounge converts into a large double.

The Adria's kitchen features a full oven/grill plus a massive 160-litre fridge/freezer. The compact washroom doesn't benefit from a separate shower but there's still a fair amount of room in which to shower, plus there's a neat vanity unit around the washbasin. If you like the continental styling (with optional coloured cab), the Adria could be a great motorhome, perfect for those who sometimes want to travel with a grandchild. External storage is a practical plus too.

### fact file

**BASED ON:** Fiat Ducato 130 Multijet

**PRICE FROM:** £49,750

**DIMENSIONS:** 7.35m L, 2.29m W, 2.65m H

**MAXIMUM WEIGHT:** 3500kg

**PAYLOAD:** 450kg

**TEST DATE:** November 2010



## AUTO-TRAIL FRONTIER SCOUT



The Scout is a large family motorhome with two separate seating areas. The most sociable area is the rear lounge, but up-front there's a pullman dinette which

comes with a pair of three-point seatbelts. As an extra cost option, you can also add three-point belts to the rear-facing pair of seats.

One of the best features is the washroom, which has a wood-effect wall-lining and a separate shower.

The kitchen includes a full cooker, plus a 190-litre fridge/freezer. All-in-all a great family motorhome, where the kids could have their own living and sleeping space.

### fact file

**BASED ON:** Fiat Ducato 40 Heavy, 130 Multijet

**PRICE FROM:** £61,770

**DIMENSIONS:** 7.90m L, 2.31m W, 3.03m H

**MAXIMUM WEIGHT:** 4250kg

**PAYLOAD:** 600kg

**TEST DATE:** n/a



## BESSACARR E495



### fact file

**BASED ON:** Fiat Ducato 40 Heavy 130 Multijet

**PRICE FROM:** £47,154

**DIMENSIONS:** 7.49m L, 2.24m W, 3.05m H

**MAXIMUM WEIGHT:** 4005kg

**PAYLOAD:** 653kg

**TEST DATE:** March 2010 (Swift Sundance 630L)

The E495 is targeted at larger families, since it provides sleeping accommodation and travel for six. At the rear there's a large lounge with twin settees around a central chest. Then, up-front, there's a pullman dinette, with belted travel seats for four people.

Perhaps the only real let-down is the washroom, which doesn't feature a separate shower and is rather small

with an intrusive wheelarch. The kitchen is up-front, opposite the dinette, and this is well-equipped for family use, with a 96-litre SES fridge, microwave and full cooker.

